





**Bruno**

Piano Intercomunale di Protezione Civile  
Comunità Collinare Vigne & Vini

**Risorse strumentali**

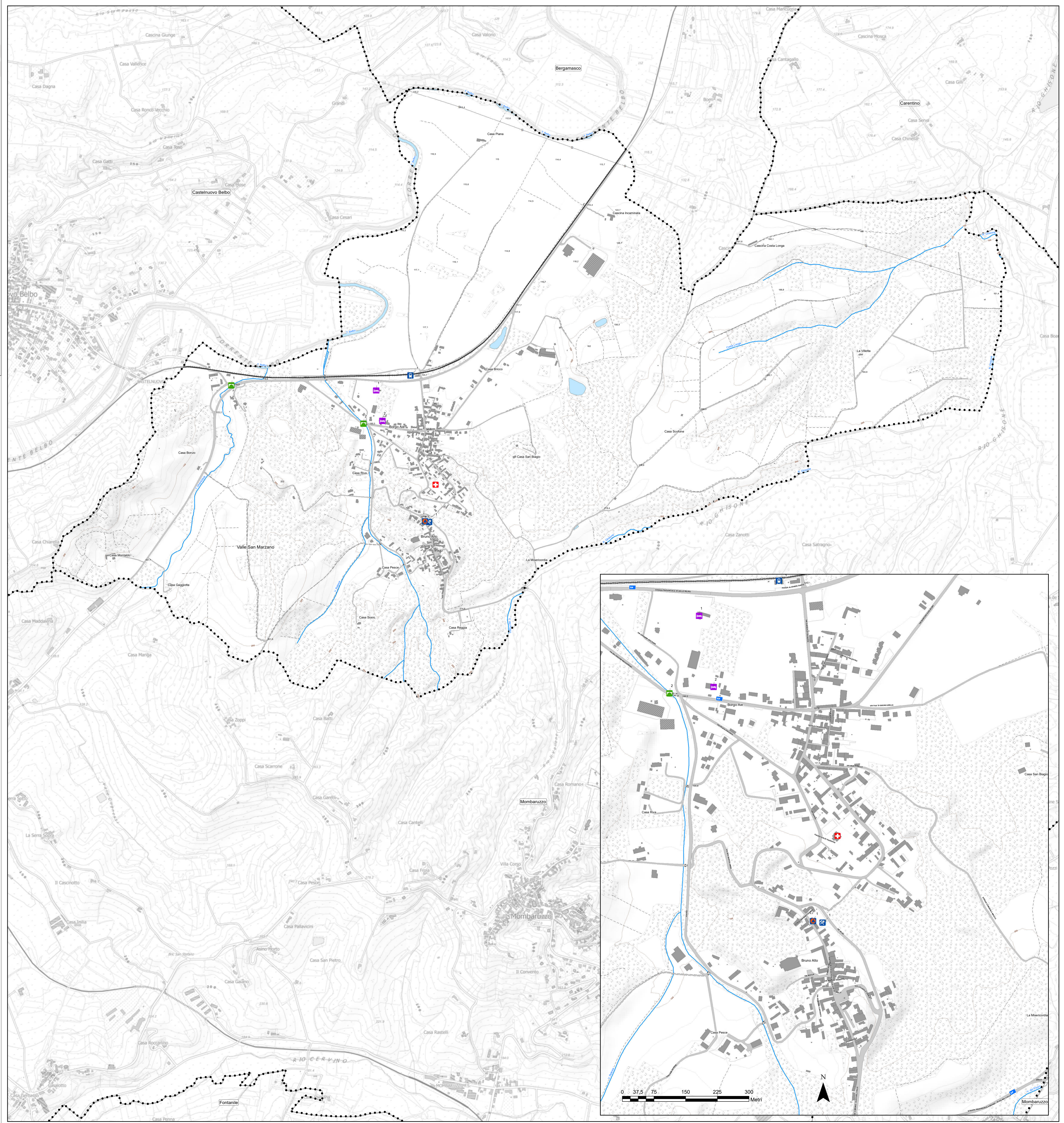
BRUNO  
 CALAMANDRANA  
 CASTELLETO MOLINA  
 CASTELNUOVO BELBO  
 CORTIGLIONE  
 FONTANILE  
 INCISA SCAPACCINO  
 MARANZANA  
 MOMBARUZZO  
 NIZZA MONFERRATO  
 QUARANTI  
 VAGLIO SERRA

scala  
1:7.000

Rev.00 - 2022












**LEGENDA**


**INFRASTRUTTURE**

-  Ponti (2)
-  Stazioni di collegamento (1)

**STRUTTURE**

-  Strutture ricettive (2)
-  Centri operativi (1)
-  Strutture sanitarie (1)

**MATERIALI**

-  Attrezzature (1)

0 87,5 175 350 525 700  
 Metri

N

